

RIVERHOMES

Cheyne Walk
Chelsea SW10

£7,000 per month
Furnished



Cheyne Walk Chelsea SW10

This beautiful 1,848 sq. ft. houseboat has been designed and to the highest standards both internally and externally. The boat has a wonderful entertaining space on the upper level comprising a large open-plan kitchen living space with direct access to a large sun deck offering incredible views across the Thames. One the lower level there are two large en-suite bedrooms with a dressing room in the master suite. There is also a separate third bedroom / study. The lower level is air-conditioned, and the boat is equipped with underfloor heating throughout, a

zoned alarm system and a wired broadband-ready computer network.

With all the comforts of a typical home, such as mains electricity, water, sewerage and telephone services, all residents benefit from a night watchman, CCTV coverage and an on-site maintenance team. Cheyne Walk is close to a number of transport options, the green spaces of Battersea Park and the shopping and leisure amenities of Kings Road and Sloane Square.

KEY FEATURES

Houseboat designed to highest standards

Two large en-suite bedrooms and third bedroom / study

Two bathrooms

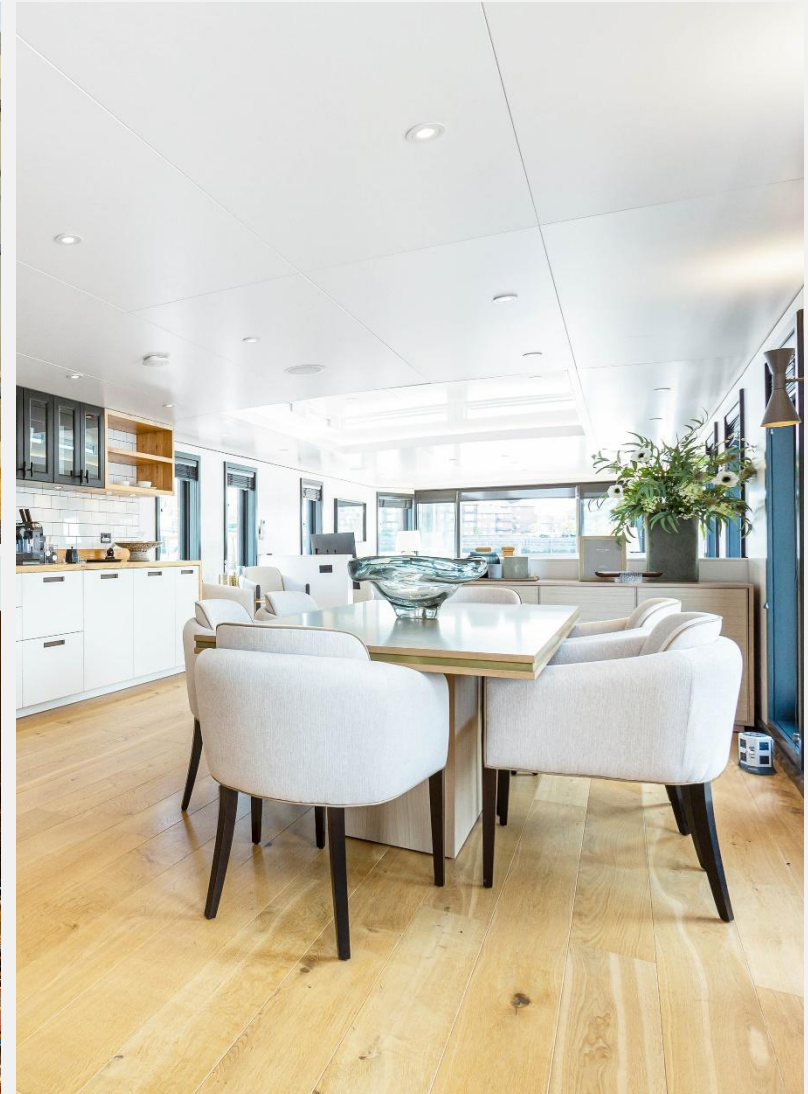
Large open-plan kitchen / dining area

Separate Study

Underfloor heating throughout

The lower level is air-conditioned

Large terrace





KEY INFORMATION

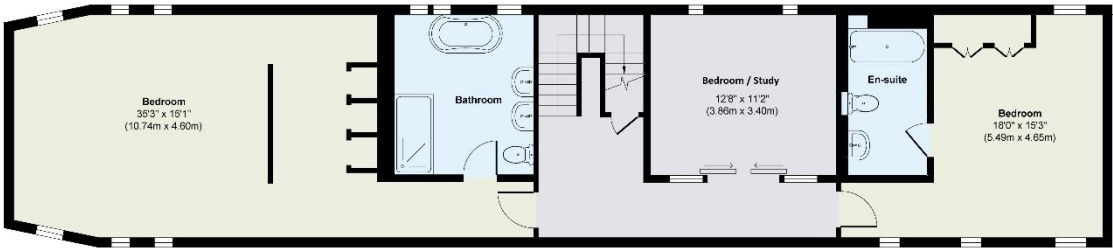
Local authority:	Royal Borough of Kensington and Chelsea
Internal area:	1,848 sq. ft. / 171.7 sq. m.
Garden area:	Deck
No. of bedrooms:	3
Council tax:	Band F



Deck



Upper Deck
Approximate Floor Area
727 sq. ft
(67.59 sq. m)



Lower Deck
Approximate Floor Area
1121 sq. ft
(104.11 sq. m)

Approx. Gross Internal Floor Area 1848 sq. ft / 171.70 sq. m

Illustration for identification purposes only, measurements are approximate, not to scale.

World Waterside Ltd trading as riverhomes for themselves and its clients give notice that 1: They are not authorised to make or give any representations or warranties in relation to the property either here or elsewhere, either on their own behalf or on behalf of their client or otherwise. 2: These particulars do not form part of any offer or contract and must not be relied upon as statements or representations of fact. Any areas, measurements or distances are approximate. The text, photographs and plans are for guidance only and are not necessarily comprehensive. 3: It should not be assumed that the property has all necessary planning, building regulation or other consents and any services, equipment or facilities have not been tested. 4: Lease details, service charges, ground rent (where applicable) and council tax are given as a guide only and should be checked and confirmed by your Solicitor prior to exchange of contracts. 5: They assume no responsibility and any intending purchasers or tenants must satisfy themselves by inspection or otherwise as to the correctness of each of the statements contained within these particulars. If you require clarification of any points please contact us.